

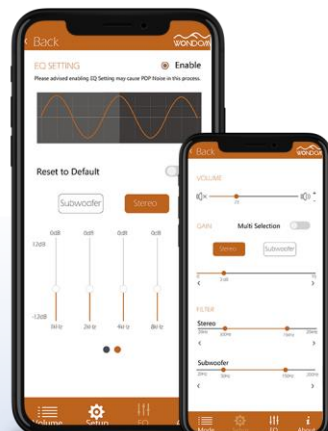
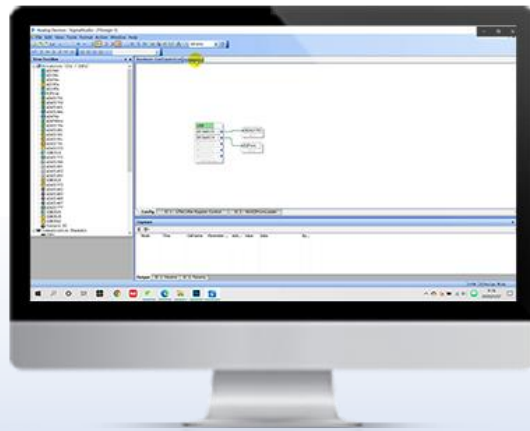


What's Required for Various Control Methods of WONDOM ADAU1701 DSP Products?

Overview

WONDOM has released several models on the basis of ADAU1701 DSP. To help customers control the audio systems more conveniently, WONDOM has developed In-circuit programmer for use with these products. After connection with programmers, these products can support different control methods as programming through SigmaStudio (Hereinafter referred to as SS), APP control and PC UI control. (Which function is supported depends on specific products.)

This document aims to tell you what is required for different control methods.



Products List – with ADAU1701 DSP

The following are the products list of WONDOM products that are integrated with ADAU1701 DSP.

The functions vary to different products. Please select to your requirements.

| Model | Description | SS Program | APP Control | PC UI Control |
|-------|--|------------|-------------|---------------|
| APM2 | 2-in, 4-out ADAU1701 DSP Kernel Board | Y | Y | Y |
| JAB3 | Mono / Stereo Class D Audio Amplifier Board Integrated with ADAU1701 DSP | Y | Y | Y |
| JAB3+ | Mono / Stereo Audio Amplifier Board Integrated with ADAU1701 DSP & BT V5.0 | Y | N | Y |
| JAB4 | 4CH 30W Audio Amplifier Board Integrated with ADAU1701 DSP & BT V5.0, Supporting Configuration as 4.0 / 2.1 / 2.0 / 0.2 Output Mode | Y | N | Y |
| JAB5 | 4CH 100W Audio Amplifier Board Integrated with ADAU1701 DSP & BT V5.0, Supporting Configuration as 4.0 / 2.1 / 2.0 / 0.2 Output Mode | Y | N | Y |

Products List – ICP Series

Different ICP products support different functions. Please select to your requirements.

| Model | Description | SS Program | APP Control | PC UI Control |
|-------|---|------------|-------------|---------------|
| ICP1 | In-Circuit Programmer | Y | N | N |
| ICP3 | In-Circuit Programmer Integrated with Bluetooth BLE | Y | Y | N |
| ICP5 | In-Circuit Programmer Integrated with Bluetooth BLE & USB to UART | Y | Y* | Y |

* The function only works when both products with ADAU1701 DSP and the ICP board support it, i.e. JAB3+ doesn't support APP control, so even if you buy ICP3 or ICP5 that supports APP control, JAB3+ still cannot support APP control after connection.

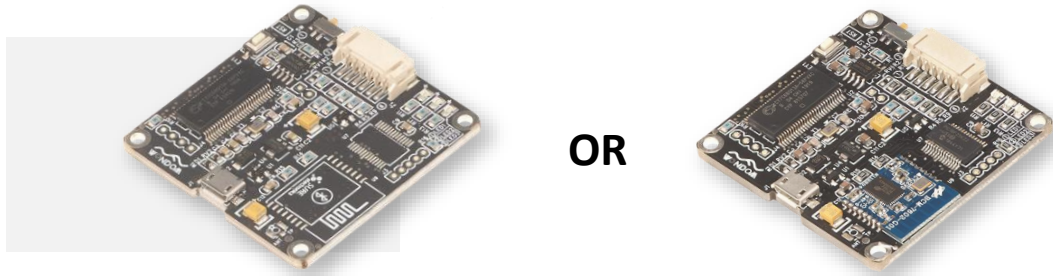
Various Applications Required ICP and Instructions

| Function | Software | ICP | INSTRUCTION | VIDEO |
|---------------------|----------------|----------------------|--|---|
| Programming with SS | SS | ICP1 | WONDOM ICP1 User Guide | How to use WONDOM ICP3 to program ADAU1701 with SigmaStudio and realize APP control |
| | | ICP3 | WONDOM ICP3 User Guide | |
| | | ICP5 | WONDOM ICP5 User Guide | Video |
| APP Control | Miumax (APP) | ICP3 | WONDOM ICP3 User Guide | Use Miumax APP to control audio 2.1 system built by WONDOM JAB3&JAB2 |
| | | ICP5 | WONDOM ICP5 User Guide | Video |
| PC UI Control | Miumax (PC UI) | ICP5 | WONDOM ICP5 User Guide | Video |

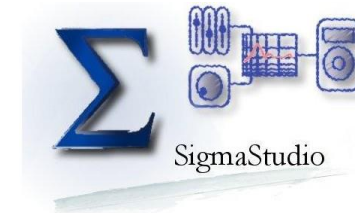
Note: The products and documentation in red are processing and will be released soon.

SS Programming

1 Original USBi or WONDOM ICP3/ICP1



2 PC & SS Software



Analog Devices, Inc.
SigmaStudio™

3 Supporting Documents

We have made reference documents for programming DSP with SS.
You can click [HERE](#) to view.

4 Demo Program

You may want demo programs for reference when you write your own program. We have uploaded the demo program for your download.



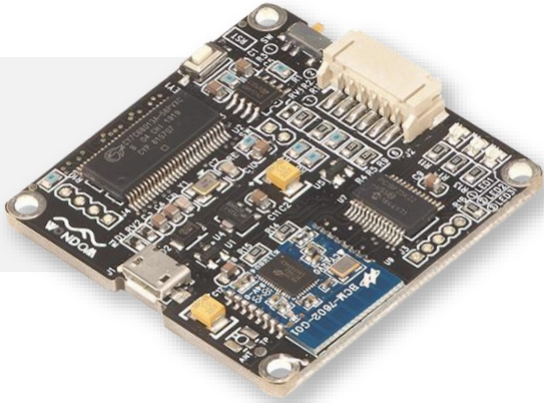
Demo Programs for Programming

Here are the demo programs for the products. You can download them for reference. The demo program is only for demonstration of signal flow chart.

| Products | Demo Program | Document you may need |
|---------------|---|--------------------------|
| APM2 | APM2_SigmaStudio.dspproj | Download |
| JAB3 - Mono | JAB3_SigmaStudio_MONO.dspproj | Download |
| JAB3 - Stereo | JAB3_SigmaStudio_STEREO.dspproj | |
| JAB3+ | JAB3+_Stereo_ADAU1701_DEMOProgram.dspproj | Download |
| JAB4 | JAB4_ADAU1701_DEMOProgram.dspproj | - |
| JAB5 | JAB5_ADAU1701_DEMOProgram.dspproj | Download |

APP Control

1 WONDOM ICP3



2 Miumax V2.0



Android



iOS

3 Factory Settings Program

Specialized program is required for the DSP products to support APP control. If you have re-write the program, you need to reset factory settings for APP control functions.



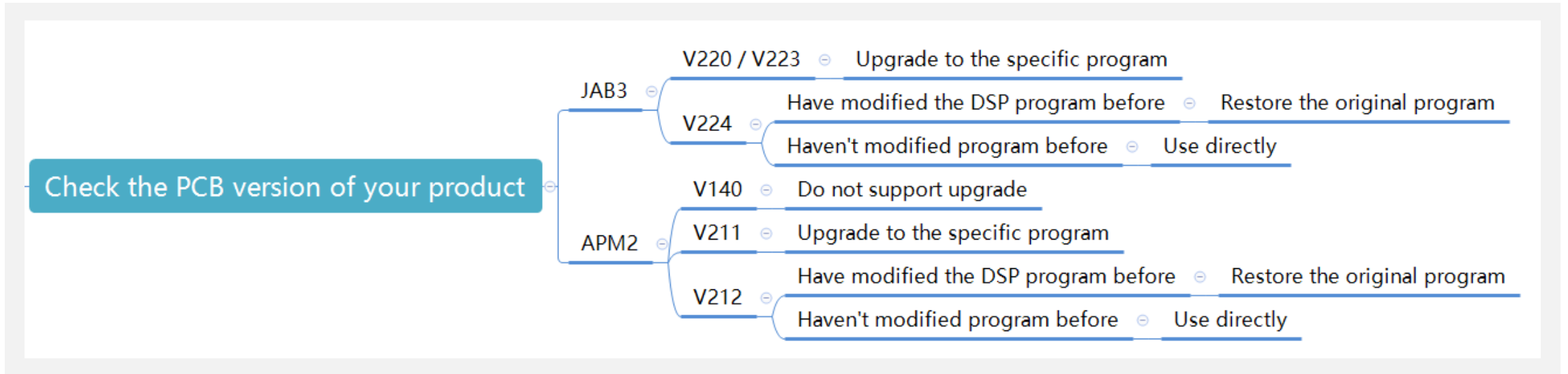
Self-Check

We have upgraded the APP before, so there are two apps, Miumax V1.0 and Miumax V2.0.

The right chart is the default APP version that products of different PCB version support.

If you want to use the latest APP – Miumax V2.0, please do as the following picture shows.

| Product | PCB Version | Supportive APP |
|---------|-------------|----------------|
| JAB3 | V220 | - |
| | V223 | Miumax V1.0 |
| | V224 | Miumax V2.0 |
| APM2 | V140 | - |
| | V211 | Miumax V1.0 |
| | V212 / V220 | Miumax V2.0 |





Programs for APP Control

Please download the corresponding HEX file for APP control function after self-check. As for how to restore factory settings with ICP3, please view this [video](#).

JAB3+, JAB4 and JAB5 do not support Miumax V2.0 by now. We may upgrade the APP in the future.

| Products | Factory Settings Program | Version |
|---------------|---|------------------------|
| APM2 | APM2_APPCtrl_V1.0.Hex | V1.0 (For Miumax V1.0) |
| | APM2_APPCtrl_V2.0.Hex | V2.0 (For Miumax V2.0) |
| JAB3 - Mono | JAB3_APPCtrl_MONO_E2Prom_V1.0.Hex | V1.0 (For Miumax V1.0) |
| | JAB3_APPCtrl_MONO_E2Prom_V2.0.Hex | V2.0 (For Miumax V2.0) |
| JAB3 - Stereo | JAB3_APPCtrl_STEREO_E2Prom_V1.0.Hex | V1.0 (For Miumax V1.0) |
| | JAB3_APPCtrl_STEREO_E2Prom_V2.0.Hex | V2.0 (For Miumax V2.0) |