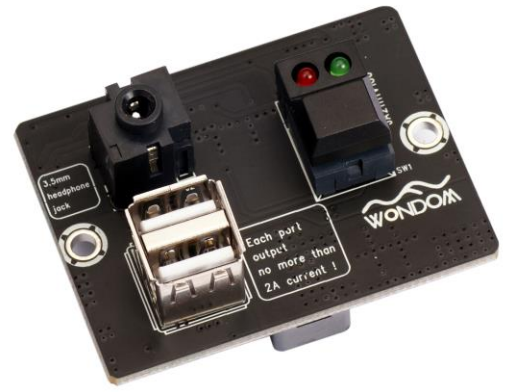


JAB Connectors

Interface Extension Board with 2 x USB Charge Only and 3.5mm AUX Port (AA-JA11112)



Key Features

- Available for BC1.2 Protocol
- Equipped with ground isolation
- Typical input amplitude
- 2.4x1.8 inches PCB size
- 3.5mm AUX Jack
- Switch for mute control of JAB2 (*not applicable for JAB1)
- Aluminum mount panel customizable
- Weight: 48g/0.11lbs (±10%)

Overview

The 2-port USB charger on interface extension board supports USB charging specification, revision 1.2 (BC 1.2) which could automatically config D+ and D- lines connections for an attached device. The interface extension board automatically adjusts its output level based on the connected device. It is compatible with smartphones and tablets from Apple, Samsung, HTC, Google and BlackBerry. The extension board can charge up to two devices at the same time, which can get more output than ordinary dual-port chargers. A maximum output of 5.25V/2.1A brings you to a whole new level of high-speed charging. And it is equipped with Ground Noise Isolation, so it will not lead to noise on the 3.5mm auxiliary input port caused by charging. USB Type-C form charging port is optional. Besides, it can be panel mounted. If you need this, please don't hesitate to contact us.

Characteristics

1. Available for BC1.2 Protocol

Two USB charging ports are both available for BC1.2 Protocol, which can charge all the portable devices, with 2.1A maximum per port.

2. Equipped with ground isolation

The interface extension board is equipped with ground isolation, which can reduce the charging noise effectively.

3. Typical input amplitude

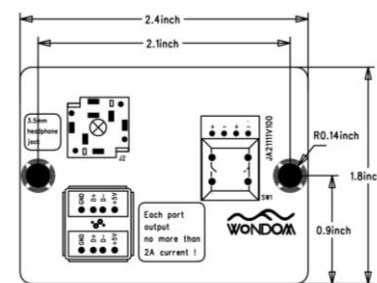
The interface extension board has a typical input amplitude of 300mV.

Electrical Specifications

Specifications typical @ +20°C unless otherwise noted. Specifications subject to change without notice.

Parameters	Conditions	Min.	Typ.	Max.	Units
Supply power	-	8	12	24	VDC
Idle current	VIN=12V	-	25	50	mA
USB ports output voltage	VIN=12V	4.75	5.1	5.25	V
USB ports output current	Vusb=5.1V	-	-	2.1	A
Operating temperature	-	-	20	50	°C
Storage temperature	-	-20	20	105	°C

Mechanical Dimensions & Connection



Dimensions	A (inch/mm)	A1 (inch/mm)	D (inch/mm)
	B (inch/mm)	B1 (inch/mm)	
	3.60/91.44	3.30/83.8	0.14/3.6
	2.70/68.6	2.40/61.0	

Notes:

- The typical diameter of the screw hole is 3.8mm, which is suitable for the Φ3, 6# -32 screw.
- All dimensions are typical in inches/mm
- Tolerance x.xx = ±0.02(±0.50)



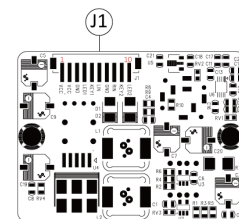
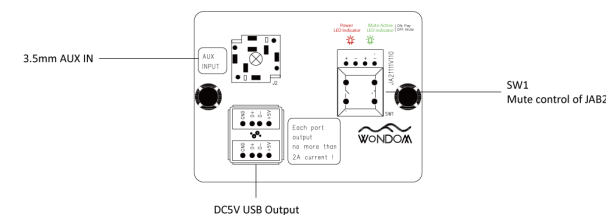
All Audio Amplifier boards are complied with ROHS and they are pre-tested with our power supply solution to comply with FCC and CE. We could provide FCC, CE and RoHs certifications for customers' convenience. The test reports will be provided upon requests by e-mails only for customers who apply for bulky purchasement of MOV USD\$10,000 or MOQ 500pcs.

Ready for:



Contact Info

- Email: info@wondom.com



Connection port with JAB2
-J1 PH-2mm-10Pos

Pin	Definition
1	VCC
2	VCC
3	GND
4	LED1
5	KEY1
6	LIN
7	GND
8	RIN
9	KEY2
10	LED2

Wonder Meeting with Melody!

Add:3F, F6, No.9, Weidi Rd.,
Xianlin University Downtown, Qixia Dist., Nanjing, China
Tel: +86-25-85260045

www.wondom.com
www.sure-electronics.com