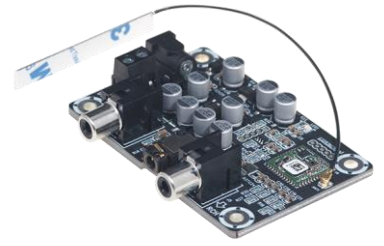


# Bluetooth Receiver Board (BRB) Series

## Bluetooth Audio Receiver Board V4.0 – BRB3 (AA-AB41136)



### Key Features:

- APT-X Decoding Algorithm
- Wide Frequency Range
- Single-end Audio Signal Output
- LED Status Indicator
- External Power and Signal Output Connector
- Reverse Polarity Protection
- Audio output distortion degree of 0.5% or less
- Size: 3.00 x 2.00 inches PCB Size

### Distributors:



All these boards are per-tested with our power supply solution to comply with FCC and CE. For all customers who need those information, please contact our distributor or Sure Electronics. RoHS compliant will need an MOQ of 1000pcs per order.

### Electrical Specifications

Specifications typical @ +25°C, Powered by 12V DC, unless otherwise noted. Specifications subject to change without notice.

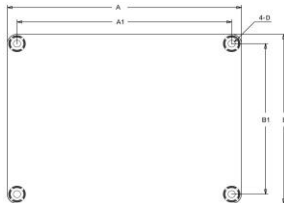
Parameter	Conditions	Min.	Typ.	Max.	Units
Power Supply	-	8	12	14	VDC
Degree of Audio Output Distortion	-	≤0.5			%
Quiescent Current	Vin=12V	-	10	-	mA
Maximum Current	-	-	0.5	-	A
BT Wireless Range	Class 2	-	-	10	m
Operating Temperature	-	-	20	50	°C
Storage Temperature	-	-20	20	105	°C

### Model Selection Guide—Bluetooth Audio Receiver Board Series\*

SKU	Model	Bluetooth version	Power Supply Range	Bluetooth Name Customization	APT-X	Bluetooth Antenna	PCB Size
AA-AB41132	BRB2	V4.0	DC 8-14V	•	-	-	3" x 2" #1
AA-AB41136	BRB3	V4.0	DC 8-14V	•	•	-	3" x 2"
AA-AB41155	BRB4	V4.0	DC 9-24V	•	•	•	3.6" x 2.7" #2
AA-AB41157	BRB6	V4.0	DC 9-24V	•	•	•	3.6" x 2.7"
AA-AB41158	BRB6P	V4.0	DC 12-24V	•	•	•	5" x 2.3" #3

Notes: • means this function is available. - means this function is not available.  
The size of AA-AB41158 in this sheet refers to the size of control panel. The PCB size is 4.6" x 1.6".

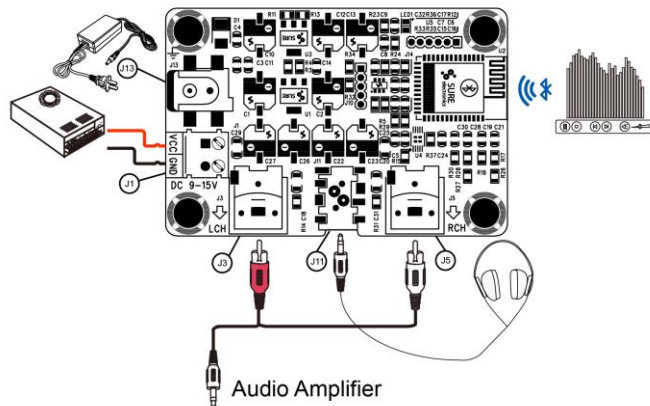
### Mechanical Dimensions



Dimension	A (inch/mm)	A1 (inch/mm)	B (inch/mm)	B1 (inch/mm)	R (inch/mm)
#1	3.00/76.2	2.70/68.6	2.00/50.8	1.70/43.2	0.14/3.6
#2	3.60/91.4	3.30/83.8	2.70/68.6	2.40/61.0	0.14/3.6
#3	5.00/127	4.74/120.4	2.30/57.15	2.04/51.8	0.13/3.2

Notes: 1. All dimensions are typical in inch(mm); 1. Tolerance x.xx=±0.02(±0.50)

### Connections



#### Power Supply Connector:

- J13 DC Jack 5.5mm/2.5mm
- J1 Terminal Block RJ128 (optional)

Inner ⊕ — Outer ⊖

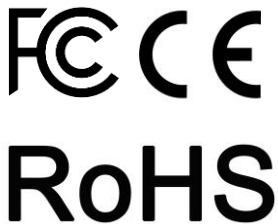
#### Audio Source Input Connector:

- Bluetooth V4.0

#### Audio Amplifier Output Connector:

- J11 3.5mm Headphone Output Jack
- J3, RCA Jack for LCH
- J5, RCA Jack for RCH

Ready for:



### Contact info

• Email:  
info@sure-electronics.com



## Sure Electronics

Make Your Audio Application Simple!

NO.9, Weidi Road, Xianlin University City, Qixia District, Nanjing, Jiangsu Province, P.R.C

[www.wondom.com/](http://www.wondom.com/)  
[store.sure-electronics.com](http://store.sure-electronics.com)  
Email: [info@sure-electronics.com](mailto:info@sure-electronics.com)  
Skype: sureelectronics